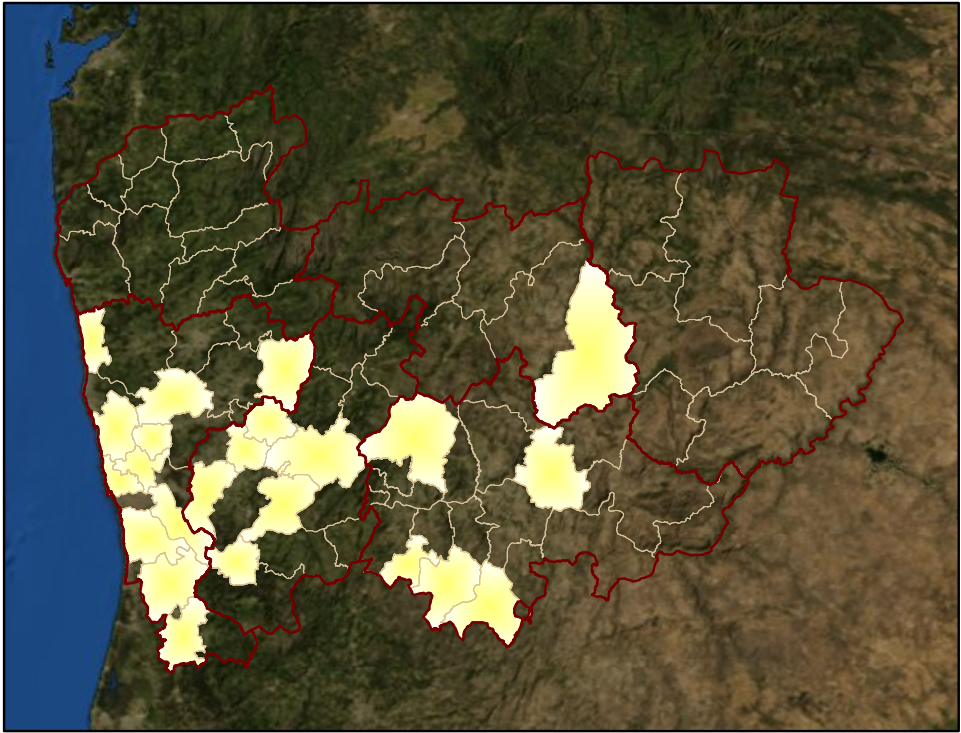
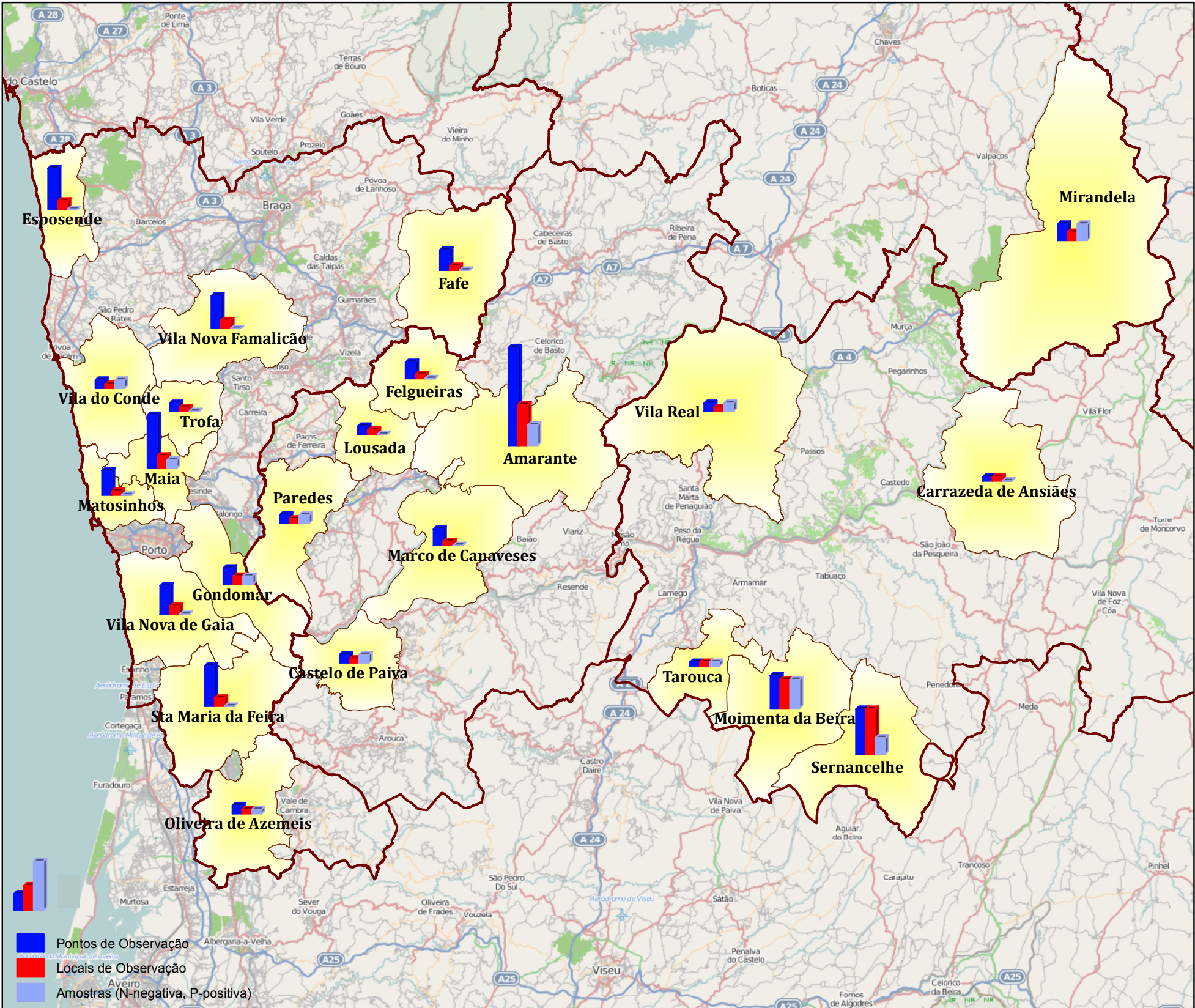


DRAP - Norte



0 15 30 60
Kilometers



0 4 8 16
Kilometers

Prospeções Fitossanitárias 2013
- *Erwinia amylovora* -

Concelho, nºPont , nºLoc, Amostra

Amarante, 24, 10, 5 N
Carraceda de Ansiães, 1, 1, 0
Castelo de Paiva, 2, 1, 2 N
Esposende, 10, 2, 0
Fafe, 5, 1, 0
Felgueiras, 4, 1, 0
Gondomar, 4, 2, 2 N

Lousada, 2, 1, 0
Maia, 13, 3, 2 N
Marco de Canaveses, 4, 1, 0
Matosinhos, 6, 1, 0
Mirandela, 4, 2, 4 N
Moimenta da Beira, 8, 7, 7 N
Oliveira de Azemeis, 2, 1, 1 N
Paredes, 2, 1, 2 N

Sernancelhe, 11, 11, 4 P
Sta Maria da Feira, 10, 2, 0
Tarouca, 1, 1, 1 N
Trofa, 2, 1, 0
Vila do Conde, 2, 1, 2 N
Vila Nova Famalicão, 8, 2, 0
Vila Nova de Gaia, 7, 2, 0
Vila Real, 2, 1, 2 N



Data:
Janeiro 2014



MINISTÉRIO DA AGRICULTURA
E DO MAR

Técnicos:
DSDAL-DASA
SIG:
Isabel Reis, DSDAL-DV